

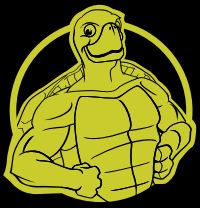


YOUR SINGLE SOURCE

FOR SURFACE + PERSONAL + JOBSITE PROTECTION

 **TRIMACO**
industrial + construction product line





CONTRACTOR STRENGTH
FLOOR SHELL[®]
 RECYCLABLE SURFACE PROTECTION

TRIMACO

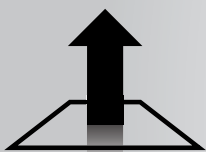
BREATHABLE

HEAVY DUTY HARD SURFACE PROTECTION

- SPILL BLOCK[®] LIQUID TECHNOLOGY
- IMPACT RESISTANT
- MADE IN USA
- WALL PROTECTOR
- RECYCLABLE
- EARN LEED POINTS



SPILL BLOCK[®]
 LEAK RESISTANT PROTECTION



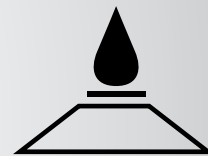
BREATHABLE



IMPACT RESISTANT



WALL PROTECTOR



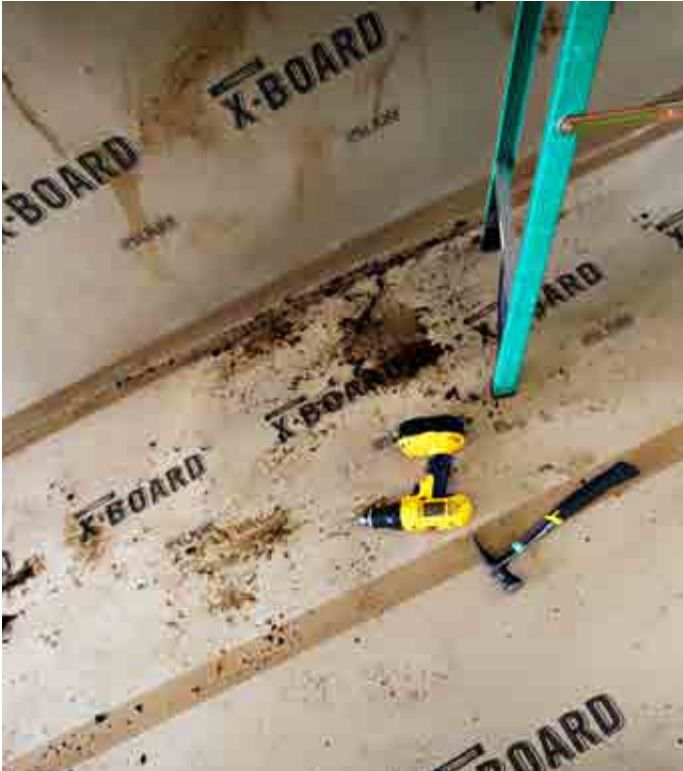
SPILL BLOCK[®]





>> FLOORSHELL® AND SEAM TAPE

- Heavy duty floor protection with liquid repellent technology
- Protects surfaces from heavy traffic including forklifts and equipment
- 3 inch seam tape has kraft backing and contractor grade adhesive



>> X•BOARD PAINT + REMODEL

- Lightweight, but tough alternative for surface protection that lasts for the endurance of the job
- Features our innovative liquid repellent technology
- Easy to use and lays out flat



>> X•PAPER

- 1.5x the thickness of regular contractor's paper
- Spend less time applying and re-applying paper on the job
- Protects existing floors from foot traffic
- Red Rosin, Builders and White Top Paper also available



>> PROTECTIVE FILMS

- Carpet, hard surface, counter top, window and HVAC
- Protects surfaces during construction, repairs and maintenance
- Easy to apply and remove without leaving a residue



>> SUPERTUFF® SURFACE PROTECTOR

- Thick and absorbent padded protection for floors and counters
- Leak-resistant and slip-resistant backing
- Long lasting and easy to clean



>> AQUA SHIELD® AND SEAM TAPE

- Waterproof, embossed rolls cover surfaces during manufacturing, building, repair and maintenance jobs
- Dust free, flame retardant, slip-resistant, reusable and recyclable
- 3 inch seam tape meets NFPA Test Method UL 723



>> STAY PUT® SURFACE PROTECTOR

- This breathable material protects surfaces while allowing them to cure
- Adhesive back keeps product in place while top layer prevents spills from penetrating
- Provides tough padded protection against scratches and dents



>> CORRUGATED X•PLASTIC

- Used for covering floors, walls and countertops
- Temporary impact resistant protection
- 100% recyclable, plus water and chemical resistant
- 4ft x 8ft sheets, 4 mm thickness, available in pallet quantities only



>> TRIMACO E-Z UP® HEAVY DUTY POLES

- Use with plastic sheeting to create dust barrier
- Heavy-duty aluminum construction, no loose parts!
- Available in three heights - 12ft, 16ft and 20ft



>> E-Z UP® PEEL & STICK ZIPPER

- Use with poly sheeting to create dust free doors/entrances to work areas
- 2-way zipper is easy to use whether entering or leaving the work area



>> E-Z UP® DOOR KIT

- Provides fast dust containment protection
- Unique C-shape zipper for quick access
- Kit includes: 1 sheet of plastic with pre-assembled C zipper, 1 roll of 1"x18' release tape (up to 14 days of use)



>> DIRT TRAPPER™ ULTRA STICKY MAT

- Helps remove dirt and other contaminants from shoes when entering/exiting job site
- Place outside jobsite or work area entrances
- 30 layers per mat with numbered tabs for easy identification



>> EASY MASK® TAPES

- BluEdge® 14-day masking serves as a multi-purpose tape
- Perfect Edge and Low Tack Tapes help create straight lines when painting
- Low Tack works well on delicate surfaces



>> DUPONT™ TYVEK® COVERALLS

- Help keep your clothes clean of dust, dirt and other contaminants
- Available in plain, with hood, or hood/boots for complete protection
- Various materials available including polypropylene, SMS, and microporous (Body Barrier)



>> DOOR JAMB PROTECTOR

- Durable construction board material
- Protects door frames from damage including gouges, nicks, dents and scratches



>> E-Z FLOOR GUARDS®

- The modern, economic alternative to traditional shoe covers
- Easily avoid tracking dirt and debris into a house or jobsite with a sheet of adhesive plastic film on the bottom of your shoe
- Simply step, pull and tear

E-Z UP™

**DUST
CONTAINMENT
PRODUCTS**



ALL OF YOUR **DUST CONTAINMENT** NEEDS

TOTAL JOBSITE PROTECTION

THE TOUGHEST, ROUGHEST, MOST DEPENDABLE PRODUCTS EVER.

800.325.7356 | TRIMACO.COM

ConstructionBrochureUS0318

 **TRIMACO**
SAVE TIME + SAVE MONEY